

GENERAL NOTES

- All works proposed shall be conducted in accordance with the related H&S and CDM regulations. Where doubt arises over any aspect of safety, consult Inspire Architects.
- Should any discrepancy be found on this drawing or related project information then the matter should be brought to the attention of Inspire Architects for resolution as soon as possible.
- This drawing may be based on a measured survey or Ordnance Survey information. Do not scale from this drawing unless for planning purposes.
- All dimensions are in millimetres unless otherwise stated. Do not scale from this drawing. All information and layouts detailed on this drawing are subject to site dimension checks.
- Copyright - All Inspire Architects drawings are the property and copyright of Sophem Limited and are not to be used for any purpose without prior written agreement.

NOTES

- Survey information taken directly from drawings issued on December 2021 by AP Land Surveys.
- Inspire Architects are not responsible for the design of the plant equipment identified on this drawing.

LEGEND

- Application Boundary
- Existing Buildings
- Proposed Plant / Buildings
- Existing buildings to be demolished
- Industrial Plant Zones - Refer to 0500 series drawings for detailed elevations

Revision	Drawn	Checked	Date
P10	CH	NC	11.08.2023
P9	CH	NC	09.08.2023
P8	CH	NC	25.07.2023
P7	CH	NC	17.07.2023
P6	CH	NC	13.07.2023
P5	CH	NC	30.06.2023
P4	CH	NC	23.06.2023
P3	CH	NC	02.06.2023



PROJECT NAME

Project Dragon - Sustainable Aviation Fuel (SAF) Production Facility

CLIENT

LanzaTech UK Limited

SHEET NAME

Proposed PDZ Layout & Equipment List

SHEET SIZE

A1 SCALE 1:1000 @ A1

STATUS CODE

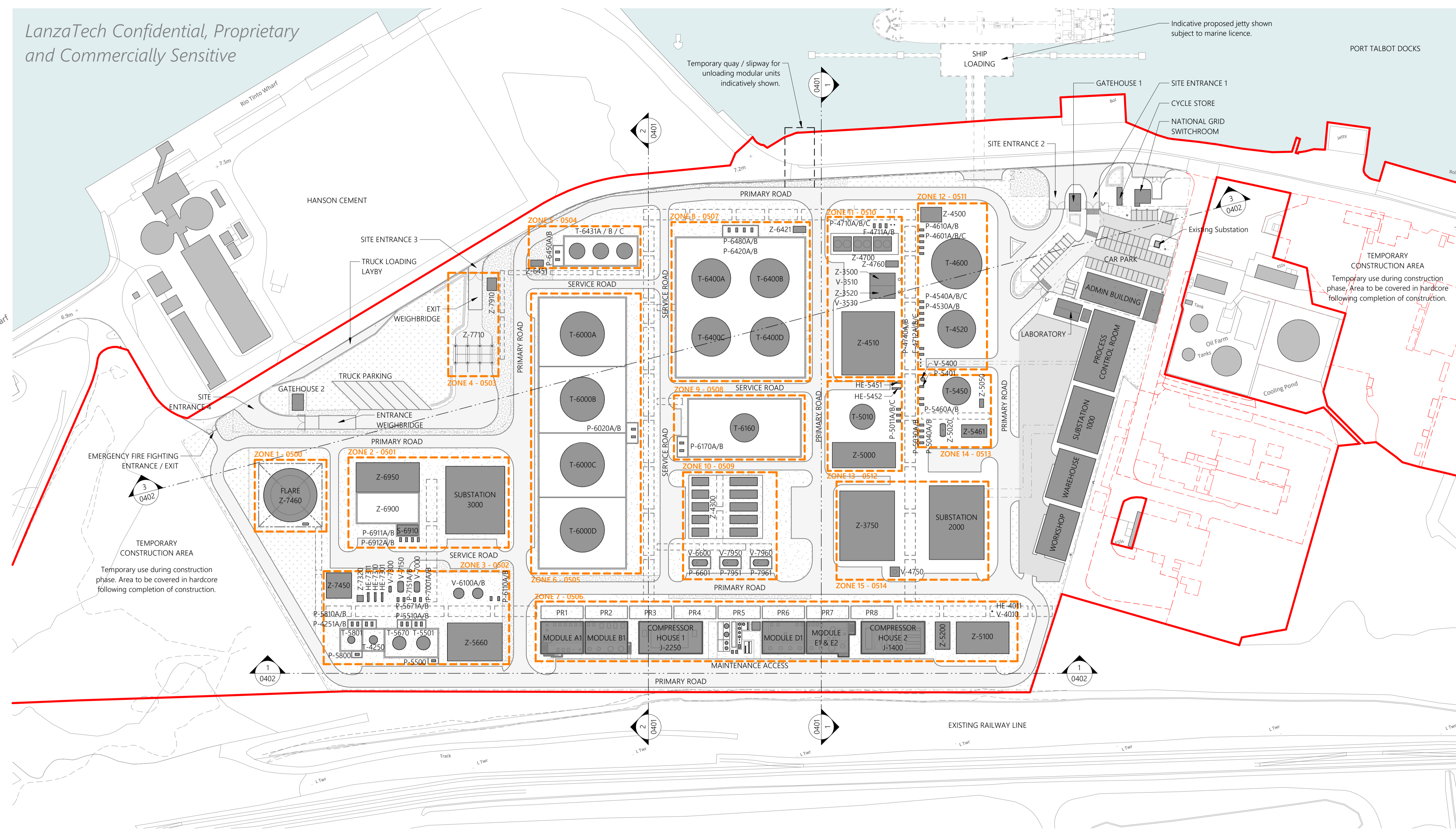
S2 STATUS PLANNING

REVISION DATE

11.08.2023 REVISION P10

DRAWING NUMBER

2143.01-IA-ZZ-ST-DR-A-0215



EQUIPMENT TAG	DESCRIPTION
F-4711A/B	FILTERS
F-4712A/B/C	WATER FILTERS
HE-4011	EXCHANGER
HE-5451	HEAT EXCHANGER
HE-5452	HEAT EXCHANGER
HE-7301	HEAT EXCHANGER
HE-7310	HEAT EXCHANGER
HE-7311	HEAT EXCHANGER
P-4251A/B	PUMPS
P-4530A/B	PUMPS
P-4540A/B/C	PUMPS
P-4601A/B/C	PUMPS
P-4610A/B	PUMPS
P-4710A/B/C	PUMPS
P-4740A/B	PUMPS
P-5011A/B/C	PUMPS

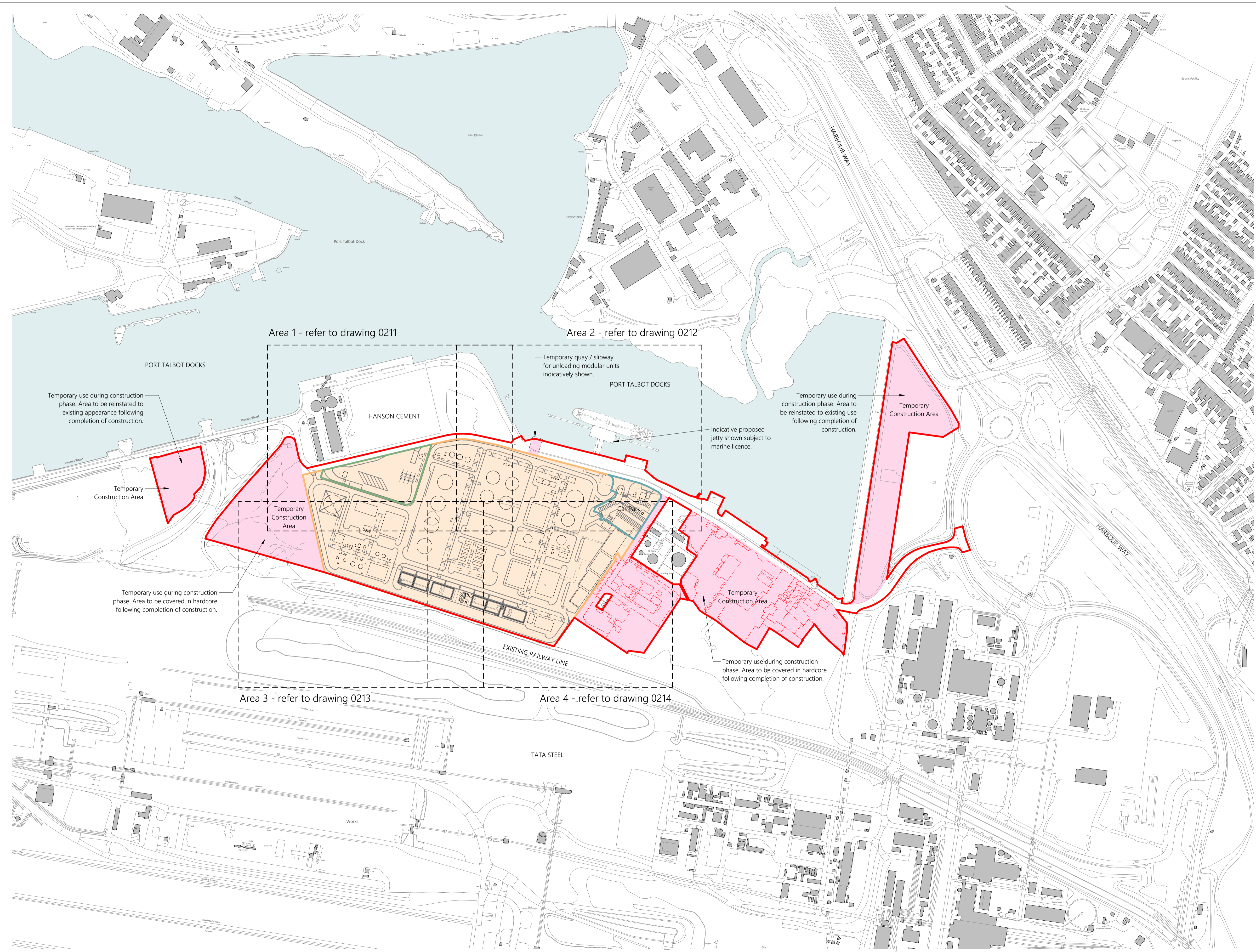
EQUIPMENT TAG	DESCRIPTION
P-5030A/B	PUMPS
P-5040A/B	PUMPS
P-5401	PUMPS
P-5460A/B	PUMPS
P-5500	PUMPS
P-5510A/B	PUMPS
P-5671A/B	PUMPS
P-5800	PUMPS
P-5810A/B	PUMPS
P-6020A/B	PUMPS
P-6110A/B	PUMPS
P-6170A/B	PUMPS
P-6420A/B	PUMPS
P-6480A/B	PUMPS
P-6450A/B	PUMPS
P-6601	PUMPS

EQUIPMENT TAG	DESCRIPTION
P-6911A/B	PUMPS
P-6912A/B	PUMPS
P-7001A/B	PUMPS
P-7151A/B	PUMPS
P-7951	PUMPS
P-7961	PUMPS
S-6910	SUMP
T-4250	STORAGE TANK
T-4520	WATER TANK
T-4600	WATER TANK
T-5010	WATER TANK
T-5450	STORAGE TANK
T-5501	STORAGE TANK
T-5670	TANK
T-5801	STORAGE TANK
T-6000A/B/C/D	STORAGE TANK

EQUIPMENT TAG	DESCRIPTION
T-6160	TANK
T-6400A/B/C	TANK
T-6431A/B/C	TANK
V-3510	RECEIVER
V-3530	RECEIVER
V-4010	DRUM
V-4750	DRUM
V-5400	DRUM
V-6100A/B	HYDROCARBON VESSEL
V-6600	DRUM
V-7000	DRUM
V-7150	DRUM
V-7300	DRUM
V-7950	DRUM
V-7960	DRUM
Z-3500	AIR COMPRESSOR PACKAGE

EQUIPMENT TAG	DESCRIPTION
Z-3520	AIR COMPRESSOR PACKAGE
Z-3750	LIQUID NITROGEN PACKAGE
Z-4300	HYDROGEN GENERATION PACKAGE
Z-4500	METERING PACKAGE
Z-4510	TREATMENT PACKAGE
Z-4700	COOLING TOWER PACKAGE
Z-4760	PACKAGE
Z-5000	PACKAGE
Z-5020	PACKAGE
Z-5050	DOSING SYSTEM
Z-5100	BOILER PACKAGE
Z-5200	BOILER PACKAGE
Z-5461	PACKAGE
Z-5660	PACKAGE
Z-6421	PACKAGE
Z-6451	PACKAGE

EQUIPMENT TAG	DESCRIPTION
Z-6900	COLLECTION BASIN
Z-6950	PACKAGE
Z-7320	PACKAGE
Z-7450	PACKAGE
Z-7460	GROUND FLARE PACKAGE
Z-7710	TANKER LOADING PACKAGE
Z-7910	PACKAGE
J-1400	COMPRESSOR HOUSE 2
J-2250	COMPRESSOR HOUSE 1



GENERAL NOTES

- All works proposed shall be conducted in accordance with the related H&S and CDM regulations. Where doubt arises over any aspect of safety, consult Inspire Architects.
- Should any discrepancy be found on this drawing or related project information then the matter should be brought to the attention of Inspire Architects for resolution as soon as possible.
- This drawing may be based on a measured survey or Ordnance Survey information. Do not scale from this drawing unless for planning purposes.
- All dimensions are in millimetres unless otherwise stated. Do not scale from this drawing. All information and layouts detailed on this drawing are subject to site dimension checks.
- Copyright - All Inspire Architects drawings are the property and copyright of Sophem Limited and are not to be used for any purpose without prior written agreement.

NOTES

- Survey information taken directly from drawings issued on December 2021 by AP Land Surveys.
- Inspire Architects are not responsible for the design of the plant equipment identified on this drawing.

- LEGEND**
- Application Boundary
 - PDZ (Production Development Zone) Industrial Area
 - PDZ (Production Development Zone) Admin Area
 - PDZ (Production Development Zone) Tanker Loading Area
 - Temporary Construction Area
 - Existing buildings to be demolished

*LanzaTech Confidential,
 Proprietary and
 Commercially Sensitive*

P8	CH	NC	09.08.2023
P7	CH	NC	25.07.2023
P6	CH	NC	17.07.2023
P5	CH	NC	13.07.2023
P4	CH	NC	30.06.2023
P3	CH	NC	23.06.2023
P2	CH	NC	02.06.2023
P1	CH	NC	01.06.2023
Revision	Drawn	Checked	Date



PROJECT NAME
 Project Dragon - Sustainable Aviation Fuel (SAF) Production Facility

CLIENT
 LanzaTech UK Limited

SHEET NAME
 Proposed Site Plan - PDZ & Temp. Construction Areas

SHEET SIZE A1 **SCALE** 1:2500 @ A1
STATUS CODE S2 **STATUS** PLANNING

REVISION DATE 09.08.2023 **REVISION** P8

DRAWING NUMBER
 2143.01-IA-ZZ-ST-DR-A-0217